



COMPANY PROFILE

2023

Gokhool Engineering & Construction Company, Limited (GECC, Ltd.) was incorporated as an engineering and construction company in 2001 by Mr. Farouk Gokhool. He was previously working as a qualified technician in AGS Ltd. Later he became the manager in the same company. He left AGS LTD in year 2000 and created his own company under the name of GECC LTD. The company is specialized in the construction of Power Lines whether it is Over-Head-Line or Underground Cable works. Mr. Gokhool has an experience of over 40 years in this field.

During the past years, GECC Ltd, has worked and gained valuable experience in supply-chain management; general and specialized construction; constructions, maintenance and upgrading of overhead and underground power lines; civil works that include construction services, supplies, installation and maintenance, synthetic turf and track, solar power solutions and much more. We know that the standard of construction varies from company to company, but GECC, Ltd. has, over its long trajectory, developed highly-qualified teams to cater to every need our valued clients may have.

In addition to its core business, GECC, Ltd. also hosts numerous complementary services ranging from field engineering, equipment procurement and/or rental, material supplies, testing and commissioning of various maintenance services, etc. Moreover, our commitment to providing a professional, consistent and timely service, while maintaining competitive and affordable rates are all key to our company's outstanding (and even enviable) growth record. We have recently completed 22 & 66 KV transmission line on a turnkey project. We have design, built and commission 66 KV sub station for a solar farm of 15 MW in the north of Mauritius. Our main client is the Central Electricity Board, the Independent Power Producers, Ministry of Youth & Sports, Municipalities, Village Council etc. We have completed various project of pipe laying for water works.



COMPANY OVERVIEW

ABOUT US

GECC, Ltd. is an experienced company producing turnkey solutions for all the high-voltage/low-voltage (HV/LV) line construction systems. Our services include HV/LV project construction; supplies and maintenance; technical consulting; electrical and civil contracting; professional operation and maintenance; testing and commissioning. Due to our broad areas of expertise, we have had the privilege of successfully completing many high-value projects through our principle of "Improving lives through the best application of the right electrical product."

GECC, Ltd. has experience in various electrical and solar infrastructure and electrical construction projects like substations, electrical transmission lines, industrial facilities, shopping malls, sports complexes, hospitals, hotels administration buildings, treatment plants, schools and housing estates.

As a company, we believe that the electrical line systems should be installed in a fault-free manner, by carrying out all the projects in accordance to that basic principle of excellence. We also closely follow the developments for electrical safety and energy efficiency, and in this sense, our customers enjoy both the benefits of safer, more efficient electrical systems that costs less overall. Further, we are engaged in civil works such as the construction, supply and installation of synthetic turf and track.

GECC, Ltd. also stands out from any competition because of our highly skilled and experienced team that can handle the toughest projects easily. The company gives the chance to staff members to improve themselves by building on their knowledge and know-how.

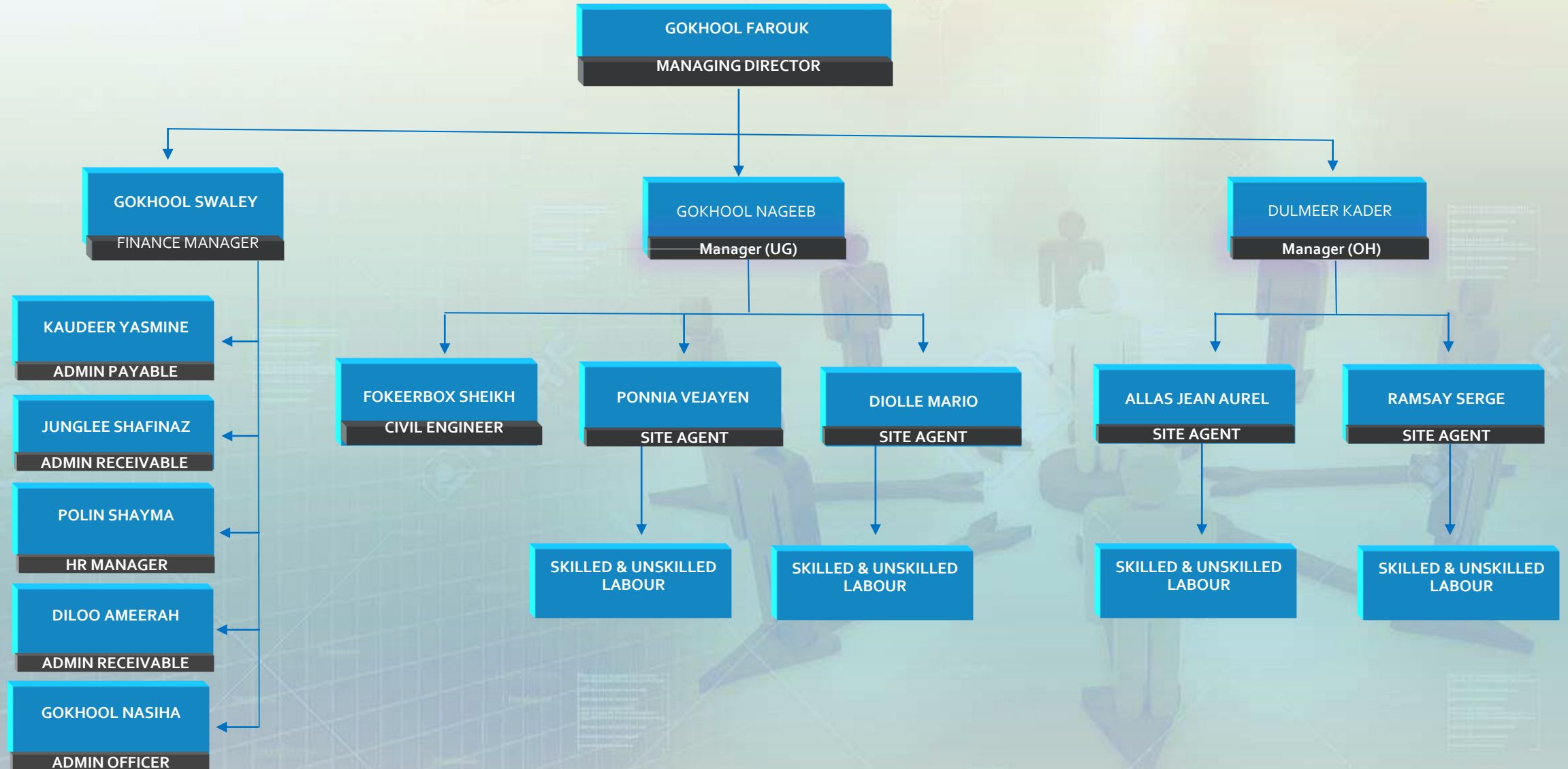
As far as innovation and technology are concerned, GECC, Ltd. is equipped with all the new and advanced technology required to carry out the large spectrum of services required by our clients. In each of our projects we are committed to work techniques that produce an efficient end result that can stand the test of time. We achieve that by evaluating every step throughout the duration of the project to ensure that it meets the high standards of our customers upon completion.

Over the years, we have been able to carve a successful entry in the market due to the enormous support of our team of professionals. This team of experts, with experience in different domains of the industry, strive to attain the organizational targets by working in close proximity with one another as a team. Well know in the national and international markets, GECC, Ltd. proceeds confidently towards the great goals with the vision of being the industry's leader.

WHY U S

- Eminent HT and LV (overhead and underground) power line construction, civil works, photovoltaic installation, synthetic turf and track and water works.
- Outstanding customer-oriented approach
- Pool of efficient engineers and other professionals who are adept with the latest technologies
- Constant effort to improve the functional efficiency of our projects
- Research and development of new ground-breaking methods
- Innovation
- Strong market network
- Supply and installation service

ORGANISATION CHART



MANPOWER RESOURCES



ADMINISTRATION & ACCOUNTING	6
CONSTRUCTION MANAGEMENT	3
QUALITY CONTROL	1
PLANNERS	2
ENGINEERS & TECHNICIANS	2
SITE MANAGERS & SUPERVISORS	4
PROFESSIONAL PROJECT MANAGERS	2
FOREMAN	4
SKILLED LABOUR	28
FIELD LABOUR/HELPER	30
SKILLED EXPATRIATES	11
EXPATRIATES (APP IN PROCESS)	6
SUB CONTRACTOR	4
SKILLED WORKERS (SUB CONTRACTOR)	22

TRAINING

In response to the skills shortage in the country, GECC Ltd has invested substantially in the training of field labour to increase its skills pool. To make good the lack of local specialised skills and knowhow, we also employ foreign workers.

GECC Ltd has its own fully equipped in-house Training Centre. It has implemented training programmes in line with accredited standards to advance employee skills and ensure trainees receive an accredited qualification. To determine the appropriate skills development required GECC Ltd provides on-going on-the-job assessments. In addition, long-term incentives ensure retention of core staff.

Typical Training Courses

- Explain and perform fall arrest techniques when working at heights
- Apply health and safety to a work area
- Perform basic fire fighting
- Demonstrate knowledge and understanding of relevant current occupational health and safety legislation
- Use and maintain power hand tools on a construction site
- Hazard identification and risk assessment
- First aid



CORPORATE SOCIAL SECURITY

In GECC Ltd Corporate Social Responsibility is an important business and economic priority and integral to our overall business strategy.

Corporate Social Responsibility (CSR) projects are selected on social need and the extent to which they are aligned with our business and can add value to our clients and our communities.

Our policy is to identify worthy social development projects in the areas in which we work. Our projects have proved highly successful, making a meaningful difference.

CSR to us is about building relationships with our customers, attracting and retaining talented staff, managing risk and building reputation.

HEALTH & SAFETY

GECC Ltd aims to stay at the fore front of the industry and has adopted and developed HSE Policies and Management Practices that sees the Quality Control of every task. Our Safety Systems are in accordance with the Occupational Health and Safety Act 2005 and they are instilled into our employees ensuring that our work is completed with *zero harm* as our number one priority.

GECC Ltd is committed to ensuring that our operations are conducted with zero harm to all people and the environment and the quality of our products and services are upheld and consistently maintained.

We empower our people to:

- ❖ Intervene when they witness any 'at-risk' behaviour
- ❖ Lead by example
- ❖ Identify and manage hazards associated with the activities for which they are responsible
- ❖ Courageously and honestly report all accidents and hazards
- ❖ Take the time to do things right; do the job safely or not at all – do not cut corners

Our HSE Culture

All of our themes have supporting behaviours. The 'everyone' behaviours apply to all people regardless of their role. The application of these behaviours will ensure that together we achieve alignment of policy, process and actions, which we regard as key to realizing our target of zero harm.

GECC Ltd is committed to:

- ❖ Provide and maintain a healthy, safe and neat working environment for all employees.
- ❖ Ensure that the Safety Management System is communicated to and understood by all staff through awareness and/or induction training.
- ❖ Identify and manage risks that may be present due to activities, products and/or services which we provide.
- ❖ Prevent incidents resulting in exposure of personnel, visitors and interested parties to risks associated with health, safety and environmental degradation or pollution.
- ❖ Comply with applicable legislation and other regulatory requirements in all areas of our operations.
- ❖ Continually improve the effectiveness of the Health and Safety System in order to reduce the exposure of employees to occupational and environmental hazards and risks.
- ❖ Encourage all employees to develop a Health and Safety Culture.

Yearly Risk assessment and performance appraisals are carried out to ensure that staff is up to date with required skills needed at work so as to ensure effective delivery on all services with *zero harm* to our workers and the public at large.

SERVICES OFFERED

GECC Ltd has over 40 years of Project Execution and Management Experience. Our in-house Estimating and Project Controls teams have the knowhow to deliver major projects on time and to budget. Our main customer is the Central Electricity Board (CEB) which carry out its main objectives of promoting, coordinating and improving the generation, transmission, distribution and sale of electricity for all purposes throughout Mauritius, in collaboration with GECC Ltd, as one of its main partners. We also provide our services to other Independent Power Producers (IPP).

OUR SERVICES:

Supply, Installation and Maintenance of HV/LV Power Lines

Supply and Installation of Substations and other Electrical Equipment

Supply and Installation of Synthetic Turf and Track


Civil Construction Works

Installation and maintenance of Photovoltaics

Hire of Equipment (Construction Vehicles)

Our flexible delivery model encompasses Early Contractor Involvement (ECI) at initial design phase, converting to construction flowing through to testing, commissioning and handover.

GECC Ltd has a team of friendly competent technicians experienced to deal with a range of works from installation to maintenance. The company is also expert in engineering and construction works. Our proven maintenance capabilities lower client cost, reduce operational risk and fundamentally improve asset reliability and safety.



HV and LV Works, Substations and other Electrical Equipment

HV and LV cable work is the main service offered by GECC Ltd. Main clients are the CEB and IPPs. It encompasses the supply, installation and maintenance of power transmission cables, both for overhead and underground. GECC Ltd has amassed great experience over the years to install and supply any types of cables including optical cables.

GECC Ltd provides the supply and termination of HV cabling up to 66kV including the supply and installation of transformers, and ring main units. We also execute all LV cable supply and associated cable support and PVC conduit systems including cable pits and underground cable ducts. At GECC Ltd we do supply and maintain electrical substations equipment including power transformers and ring-main unit among others.

Our Capabilities

- Design and installation of HV, LV and Fibre Optic cabling in boreholes.
- Installation and termination of high voltage up to 66kV, low voltage, communications, instrumentation, network control and fibre optic cabling.
- Installation of equipment in hazardous areas.
- Test installations in hazardous areas.
- Cable ladders, cable trays, catenaries, bracketing and metal conduits.
- Trenching, PVC conduits, cable pits and UG cable ducts.
- Switch room and control room builds, switchboards and distribution boards.
- Transformers, ring main units and other units and electrical equipment.
- Electrical field devices and equipment.
- Lighting and power networks.
- Earthing and lightning protection.
- Demolition work, upgrades and shutdowns.
- Test and calibration equipment is up to date with the latest instrumentation requirements as well as traceable certification.



SYNTHETIC TURF & TRACK

GECC Ltd offers the supply, installation and maintenance of Synthetic turf and track. We evaluate every step of our installation services to ensure that the client's project is a complete success. We have efficiently served renowned names such as the official contractor for FIFA in Mauritius and we are presently working for SOI (Sports Organization International) and Greenfields.




CIVIL WORKS & CONSTRUCTION VEHICLES HIRE



GECC Ltd offers the finest Construction services ranging from the smallest of maintenance jobs to a full design and build service on residential and commercial project. Over the years, we have picked some of the best craftsmen to ensure our clients that the workmanship of each step of the construction process is held to the highest standards.

GECC Ltd also owns a variety of construction vehicles and other equipment which are available for hiring. The vehicles include crane truck, backhoe, excavator, trailer and skid steer among many others, of renowned brands such as JCB Volvo and Bobcat.



Photovoltaic & Solar Energy

At GECC Ltd, and in line with Government policy, we are passionately dedicated to preserving the environment and culture in which we all work, play and love. Our company is wholly committed to delivering clean energy solutions that are customised to serve every people with personal service and creative installation options.

At GECC Ltd we truly understand what it means to live in this beautiful island of Mauritius and the importance the sun plays in preserving our way of life.

This exciting service allows our clients to switch from traditional methods of power generation to cutting edge, environmentally friendly Solar Power solutions. This efficient, low impact product can be used in residential, industrial and commercial properties, and is supported by smart-phone monitoring applications. The independent power producer can even sell surplus power back to the Central Electricity Board (CEB).

As one of the service providers of small to mid-scale solar photovoltaic (PV) systems throughout the region, GECC Ltd provides a full array of solar photovoltaic (PV) options along with the latest inverter technology and large scale lithium battery storage solutions.

PROJECTS

YEAR	CLIENT	PROJECT
2007	Kabelek/ Central Electricity Board (CEB)	Laying of 66 KV double circuit line from Nicolay to Dumas
2007	MFA-Goal Fifa	Construction of Playground on Synthetic Lawns, Reinforced concrete Footpath – Drains – Erection of Goal Posts and marking
2008/09	Ministry of Youth & Sports (MYS)	Construction of New Boundary wall – Fixing of heavy duty Metal gate at Main Entrance – Fencing work at St Francois Xavier Stadium
2009	MYS	Construction of Sport Ground Volleyball – Petanque – Covered Drain & Parking area at Savanna
2009	CEB	Replacement of Ground Wire by OPGW on 66KV Towers from Amaury to FUEL
2009	CEB	Repair of Tower on Wooton to Champagne Line
2009	CEB	Replacement of Ground Wire by OPGW on 66KV Towers from Dumas to Belle-Vue
2009/10	OTEO (CTDS)	Upgrading work at Omnicane – Civil works at Savanna (Supply and installation of 66KV Underground Cable Works)

YEAR	CLIENT	PROJECT
2009/10	OTEO (CTSAV)	Civil works at Old & New Sub-Station – Maintenance of 66KV Line 1 & 2
2009/10	OTEO (CTSAV)	Supply and Stringing of Earth Wire & Fittings on Line 1 from Savanna to Union Vale 66KV
2010	OTEO (CTDS)	Underground Cable Works to replace 66KV – Fencing works – Road Reinstatement
2010	CEB	Erection of 66KV Network at Montagne Canon
2011/12	CEB	Excavation of trench & Laying of Underground Cable from Cassis to Caudan (22 & 66 KV)
2013	Kabelek	Lighting of Football Ground
2013/14	Sarako PVP Co. Ltd	Supply of Materials & Erection of 66KV Over Head Line from La Chaumiere Sub-Station to Solar farm Bamboo.
2014	Edel Grass Bv	Lighting of Football Ground at Trianon
2014	CEB	Excavation of trench & Laying of Underground Cable Plaine des Roches
2014	CEB	Excavation of trench & Laying of Cables at Valentina Phoenix (22KV)
2015	CEB	Levelling of Land at Amaury

PROJECTS

YEAR	CLIENT	PROJECT
2015	CEB	Underground Works at Atlantis
2015	CEB	22kv Network from Union Vale to BPML
2015	CEB	Erection of 22kv UG Feeders Wooton-Cote D'or
2016	CEB	Underground cable works 22 & 66KV at Plaine Magnien
2016	CEB	Underground cable works at L'esperance Q. Militaire
2016	CEB	Underground work at Case Noyale
2016	CEB	Street Lighting at Motorway M1 Mahebourg
2016	Phoenix Beverages Limited	Construction of HT Network at Nouvel France
2016	CEB	Underground Cable Work at Le Morne
2016	Food and Allied Industries Ltd	Construction of Overhead Network & Underground Cable work
2016	CEB	Underground Cable Work at Le Morne
2016-Ongoing	Sunwatch Services Ltd	Maintenance of 66kv line from La Chaumiere to Bambous

YEAR	CLIENT	PROJECT
2017	CEB	Underground Cable Works at Vacoas
2017	CMS LTD	Drain works and laying of cable at Trianon
2018	CEB	Underground works at Rose Hill
2018	CONCO	Construction of 66KV BAY at Arsenal S/Stn
2018	Green-Yellow Construction (Mauritius) Ltd	Underground cable works (22&66KV) from Jinfei CEB S/Stn to Green Yellow Solar Farm at Pointe aux piments
2019	CEB	Installation of optical cable from Chaumiere to R/Brunes Stn
2019	CEB	Undergrounding /Civil works for CEB network at Rose Hill for Metro Express
2019	CEB	Re-routing of Underground works at Cote D'Or Feeder for Sport Complex
2019	CEB	Installation of OPGW at Baie Jacotet
2020	CEB	Underground cable works & Reinstatement work at ENT Vacoas
2020	CEB	Supply to traction power station at Barkly for Metro Express
2020	Meaders Feeds Ltd	Excavation & New Drain works and construction of absorption pit
2020	CEB	Excavation work at Curepipe for Metro Express

PROJECTS

YEAR	CLIENT	PROJECT
2020	District Council of Flacq	Const. of CIS covered Terrace & Metal Fence
2020	CEB	Excavation work at Curepipe for Metro Express
2020	Municipal Council of Vacoas Phoenix	Construction of Drains and Absorption Pit
2020	Ministry of Environment	Upgrading works at Maratha Mandir Henrietta
2021	CEB	Excavation work at Floreal for Metro Express
2021	The United Basalt Products Ltd	HT Network at UBP Geoffroy Bambous
2021	CEB	Undergrounding works at Riche Lieu & La Tour Koenig
2021	Gamma Materials Ltd	Re-routing of lv UG at La Chaumiere
2021	Numelec Ltd	Laying of UG Cables
2021 / 2022	The United Basalt Products Ltd	MV Undergorund works at Poudre D'Or
2022	CEB	Underground works at Cote Dor and Helvetia
2022	CEB	Underground cable works at La Marie

YEAR	CLIENT	PROJECT
2022	CEB	Overhead line works (Ongoing works)
2022	National Coast Guard	Lifting and Transfer of boat
2022	Gamma Constructions Ltd	Transfer of equipment using Trailer
2022	COREXSOLAR International Mauritius Ltd	Cleaning of Land & Carting away of debris
2022	CEB	Underground works at Jinfei
2022	CEB	Excavation & Laying of cable at La Tour Koenig & Reinstatement work
2022	CEB	Underground works at Ebene
2022	CEB	Excavation & Laying of cable at Malartic Curepipe for Metro Express
2022	CEB	Underground & Reinstatement works at Palmar
2023	CEB	Underground works at Pereybere & Palmar
2023	ENL Ltd	Supply of Lv Network for Bungalow at Valetta
2023	Beijing Construction Engineering Group Co Ltd	Laying of cable at Cote D'Or Data Centre

GALLERY

DRAIN WORKS AT MUNICIPAL COUNCIL OF VACOAS PHOENIX



GALLERY

EXCAVATION & CABLE LAYING AT ATLANTIS FOR THE CEB



GALLERY

EXCAVATION WORK AT PALMAR FOR THE CEB



GALLERY

TRAILER SERVICES: TRANSFER OF EQUIPMENT



GALLERY



GALLERY



Transportation and Fixing of 22/66KV TX



Assembling of TX



GALLERY



LIST OF EQUIPMENT

Our company is very well equipped with latest technologies & equipment such as :

- CITROEN BERLINGO : 2
- PEUGEOT LANDTREK 4X4 : 2
- RENAULT KIGER : 1
- TOYOTA DYNA : 3
- HYUNDAI HD72 : 2
- DAF CF85 WITH CRANE : 3
- DAF CF85-380 WITH CRANE : 2
- DAF LF 45 WITH CRANE : 2
- EICHER 1080 XP : 1
- ISUZU LS : 2
- KING GTS TRI AXLE : 1
- MAZDA BT50 : 1
- JMC DOUBLE CAB : 1
- DAF LF45 WITH CRANE : 2
- ISUZU DOUBLE CAB : 2
- LOWBED : 1
- JCB 1CX : 2
- AIR COMPRESSOR : 6
- BOBCAT SKID STEER LOADER S450 : 5
- BOBCAT BACKHOE LOADER B730 : 3
- VOLVO BACKHOE BL 61 : 3
- JCB 65R : 3
- VOLVO ECR 88 : 3
- WACKER / PLATE : 7
- ASPHALT CUTTER : 4
- ROLLER : 2
- WINCH : 2
- CONCRETE MIXER : 6
- POKER VIBRATOR : 4
- JCB JS220 EXCAVATOR : 3
- VOLVO EXCAVATOR 40T : 3

& the list goes on

THANK YOU

QUESTIONS?

CONTACT DETAILS: +230698-0268 | EMAIL: geccltd@intnet.mu

FOR MORE INFORMATION, LOG ON TO www.geccltd.mu